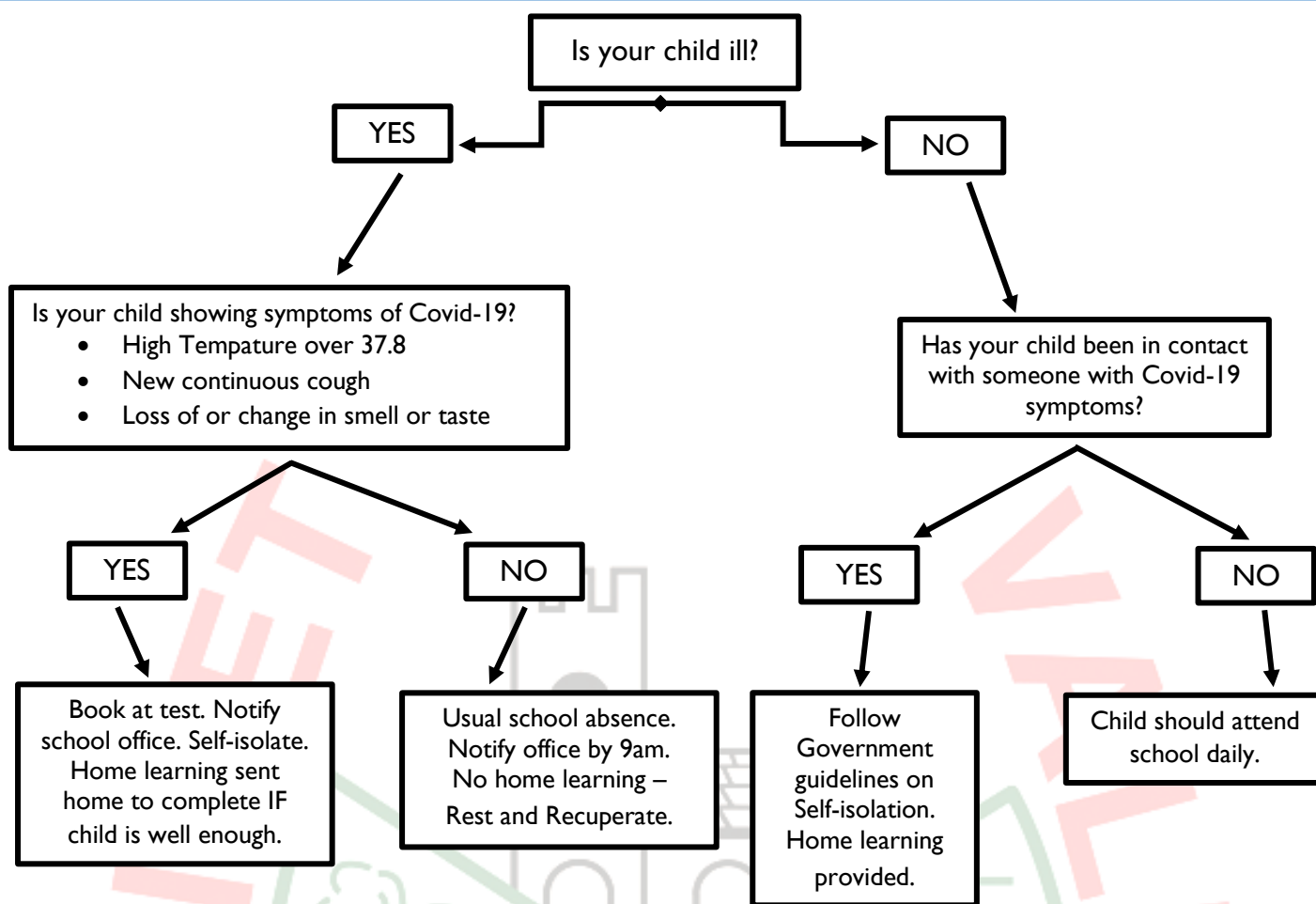


## Covid-19 Home Learning Plan

Scenario	Organisation	Core Learning	Other expectations.
1 Pupil waiting for Covid-test or results.	Learning pack sent home via Seesaw, or printed pack delivered. Weekly learning pack. Child to upload and return work daily.	Reading Tasks Writing Task Maths Task Topic Task  Daily check in with teacher or TA via Teams or on Phone.	Reading – everyday Spelling practice or Reading Egg assignments TT Rock Stars
2 Pupil self-isolating due to family member testing positive, or contact from Track and Trace	Learning pack sent home via Seesaw, or printed pack delivered. Weekly learning pack. Child to upload and return work daily.	Reading Tasks Writing Task Maths Task Topic Task Daily check in with teacher or TA via Teams or on Phone.	Reading – everyday Spelling practice or Reading Egg assignments TT Rock Stars
3 Teacher ill – Non Covid -19 illness	Supply cover	School based learning	School based Learning
4 Teacher ill (Covid-19) Teacher and bubble isolation	Learning pack sent home via Seesaw every Sunday evening, or printed pack delivered on Monday morning if requested. Weekly learning pack. Child to upload and return work daily.	Reading Tasks Writing Task Maths Task Topic Task Daily check in with member of staff team on Phone.	Reading – everyday Spelling practice or Reading Egg assignments TT Rock Stars
5 Pupil ill (covid-19) Teacher and bubble isolation	Learning pack sent home via Seesaw every Sunday evening, or printed pack delivered on Monday morning if requested. Weekly learning pack. Child to upload and return work daily.	Reading Tasks Writing Task Maths Task Topic Task Daily class check in with teacher or TA via Teams.	Reading – everyday Spelling practice or Reading Egg assignments TT Rock Stars
6 Full lockdown / Full school closure	Learning pack sent home via Seesaw every Sunday evening, or printed pack delivered on Monday morning if requested. Weekly learning pack. Child to upload and return work daily. If bubble closes midweek – work sent out after 24hours.	Reading Tasks Writing Task Maths Task Topic Task Daily class check in with teacher or TA via Teams.	Reading – everyday Spelling practice or Reading Egg assignments TT Rock Stars

Scenario	Additional Information
All (1-6)	Learning will be uploaded to seesaw on a Sunday evening for the week. If you need a paper pack of the learning, please let the office know.
4, 5&6	All teachers will be available to give feedback and answer questions between 9.00-10.30am and from 3.30- 5.00pm Monday to Friday. Answers, marking and feedback will be put on to seesaw by 5.30pm each day that the bubble is closed. Parents and children must photograph and upload their work by 3.30pm each day for it to be marked and feedback to be given.
We understand that parent may have work commitments, which will effect timings. Please talk to class teachers if you have any concerns	
All requests for paper copies of learning pack must be made to the office. Pack will be delivered to your child on a Monday morning for the week, or after 24hours of them being at home.	



### Symptoms of Covid-19

<https://www.nhs.uk/conditions/coronavirus-covid-19/symptoms/>

If you have any of the main symptoms of coronavirus (COVID-19), get a test as soon as possible. Stay at home until you get the result.

### Main symptoms

The main symptoms of coronavirus are:

- a high temperature – this means you feel hot to touch on your chest or back (you do not need to measure your temperature)
- a new, continuous cough – this means coughing a lot for more than an hour, or 3 or more coughing episodes in 24 hours (if you usually have a cough, it may be worse than usual)
- a loss or change to your sense of smell or taste – this means you've noticed you cannot smell or taste anything, or things smell or taste different to normal

Most people with coronavirus have at least one of these symptoms.

### What to do if you have symptoms

If you have any of the main symptoms of coronavirus:

1. Get a test to check if you have coronavirus as soon as possible.
2. You and anyone you live with should stay at home and not have visitors until you get your test result – only leave your home to have a test.

Anyone in your support bubble should also stay at home if you have been in close contact with them since your symptoms started or during the 48 hours before they started.